

What 's an ePortfolio?

An ePortfolio is a collection of evidence that shows a learning journey over time (Barrett, 2010). The process of developing an ePortfolio involves gathering and reflectively interlinking and justifying evidence that demonstrates outcomes or competencies (Andre & Hartfield, 2007). The product of the portfolio can be used to showcase various skills and abilities, including graduate attributes, professional competencies and selection criteria.

How do ePortfolios differ from LMSs?

An ePortfolio platform enables students to access a Personal Learning System where the student is accountable, and the primary motivation is personal development, compared with a Learning Management System such as Blackboard 9.1, where the Unit Coordinator is accountable, and the primary motivation is the delivery, provision and assessment of learning material.

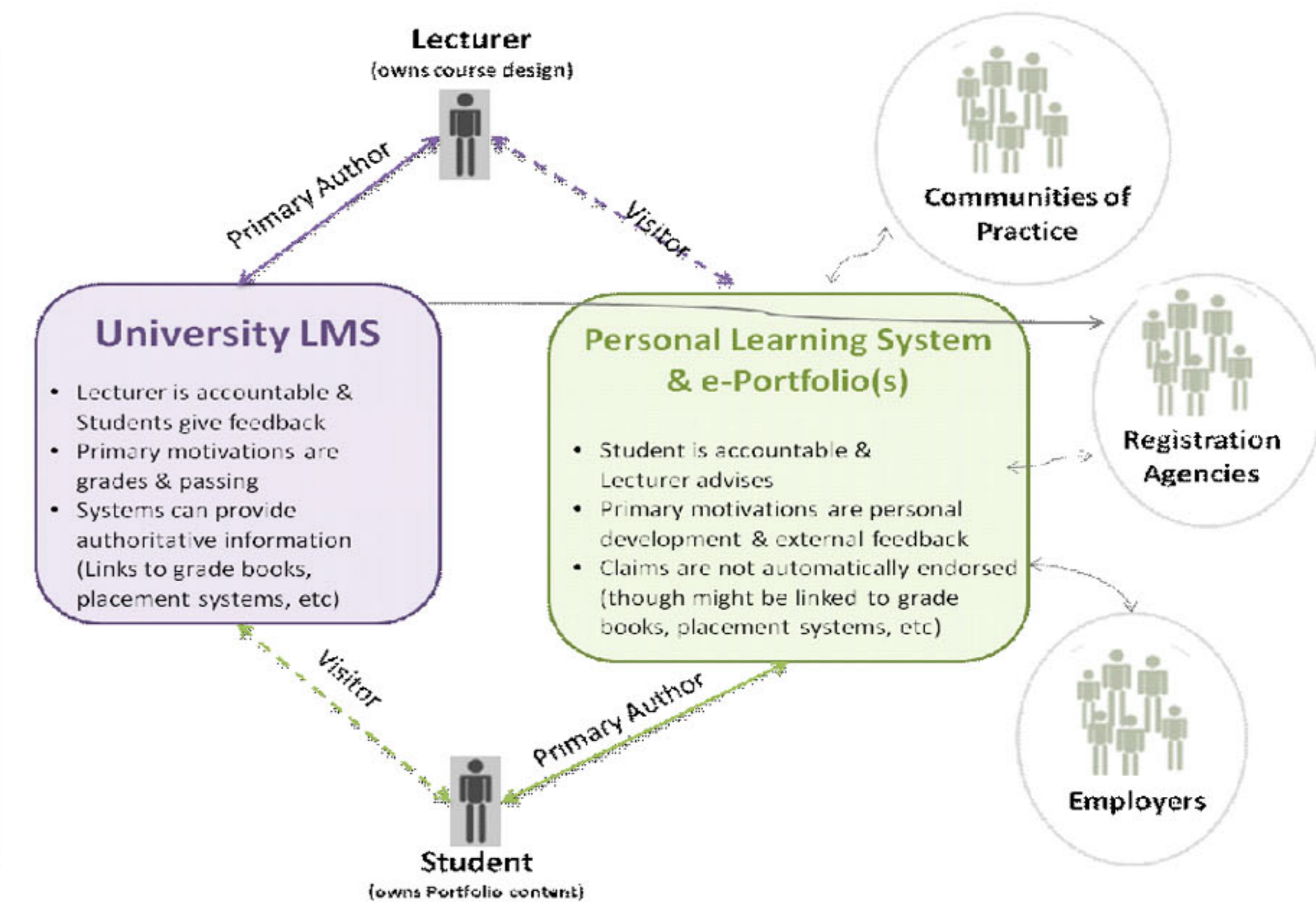
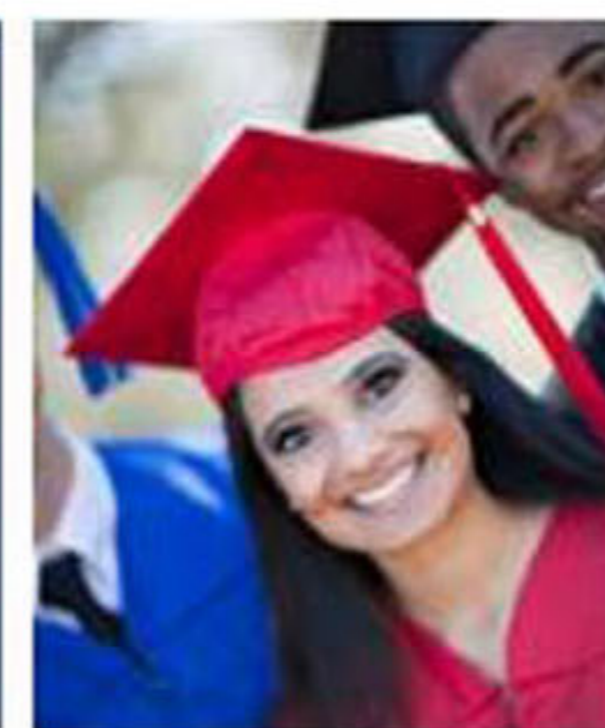
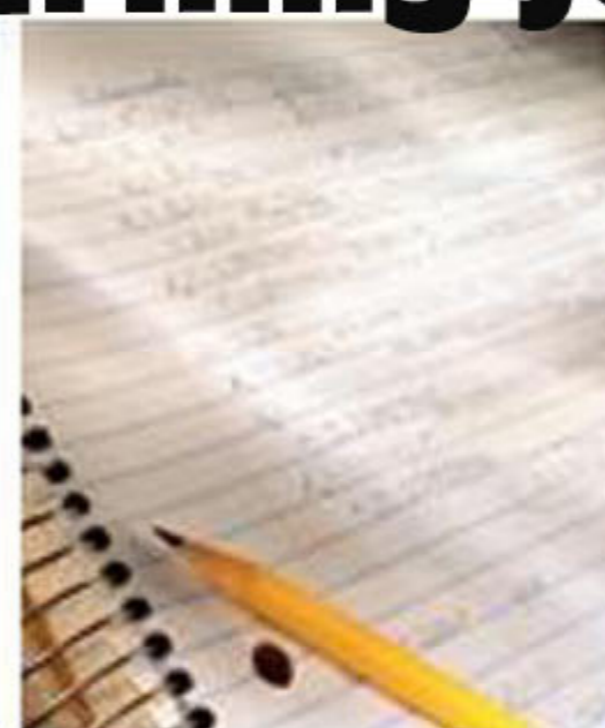


Figure 1: Distinction of function between LMS and ePortfolio platform (from Andre, 2011)

ePortfolios and the learning journey



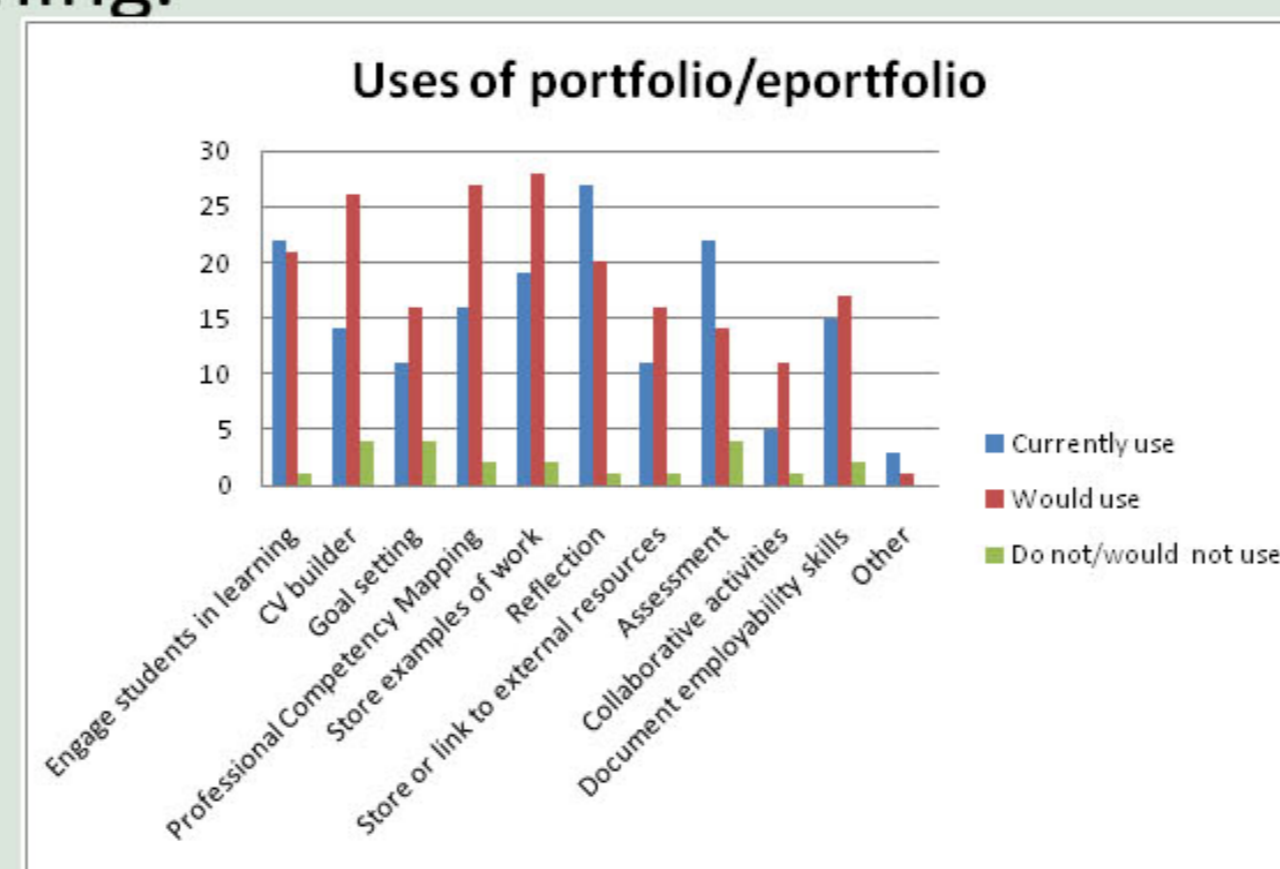
Curriculum 2012 and Beyond:
Enabling the learning journey

Why use an ePortfolio for teaching and learning?

Producing an ePortfolio provides students with a unique, personalised opportunity to integrate their formal learning across units; integrate their workplace-based learning and informal learning from life experience, together with their formal learning; and, gain skills to become successful self-directed life-long learners. An ePortfolio platform will enable students to present a summary of their learning journey in different formats for different purposes and audiences at various stages of their university and ongoing career.

What's happening @ ECU?

Presently at ECU, there is no standardised ePortfolio platform. ePortfolios are used to a limited extent across all Faculties, and are usually associated with professional competencies and/or learning outcomes and Graduate Attributes. All approaches at ECU seek to promote reflection and to encourage lifelong and independent learning.



ePortfolios and C2012

As part of C2012, an Advisory Group and Working Party have been formed. The groups consist of various staff, with representation from across the Faculties as well as from CLD, GRS, CS, HR, and PQESC. The role of the WP and AG is, through consultation, to

- Produce a proposal to ensure effective implementation of an ePortfolio system with particular emphasis on employability;
- Develop a rationale for ePortfolio use within ECU undergraduate courses; and
- Consult and plan with ITSC to decide upon which platform best provides for users and university processes, and with CLD to ensure adequate training and user support for staff and students throughout implementation.