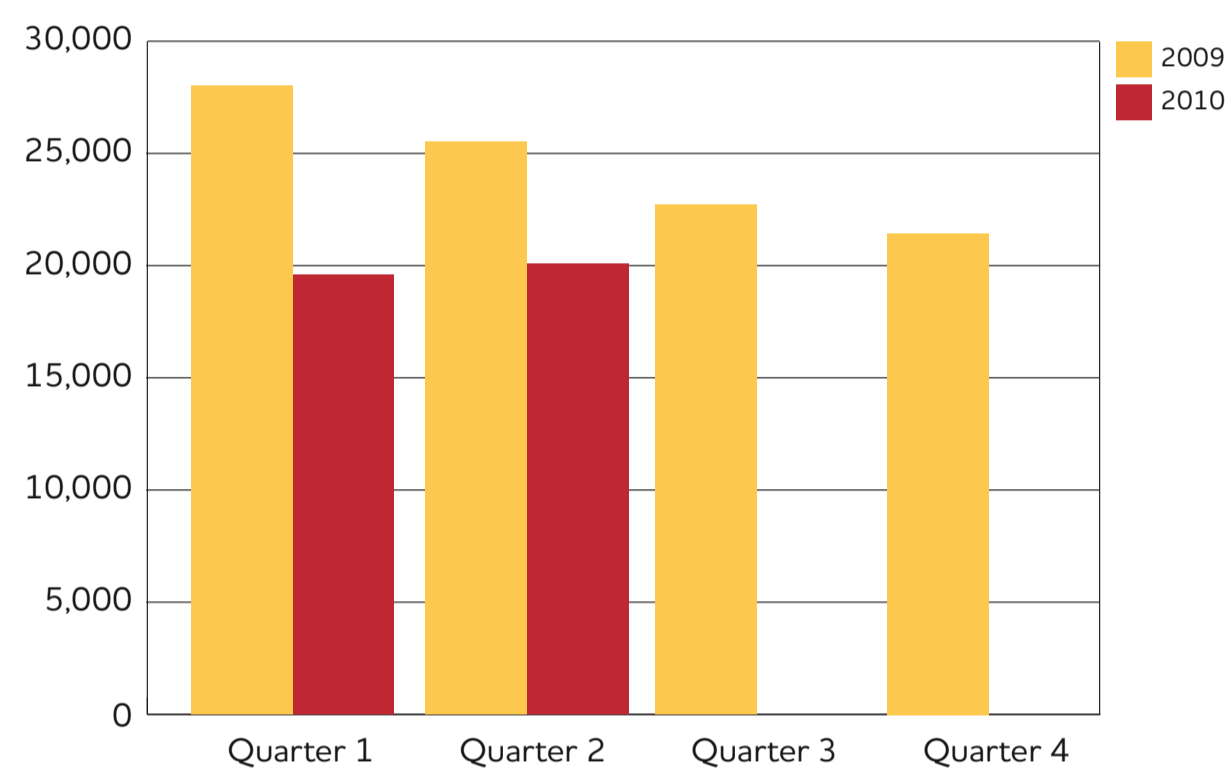


# AT ECU WE'RE PLANNING

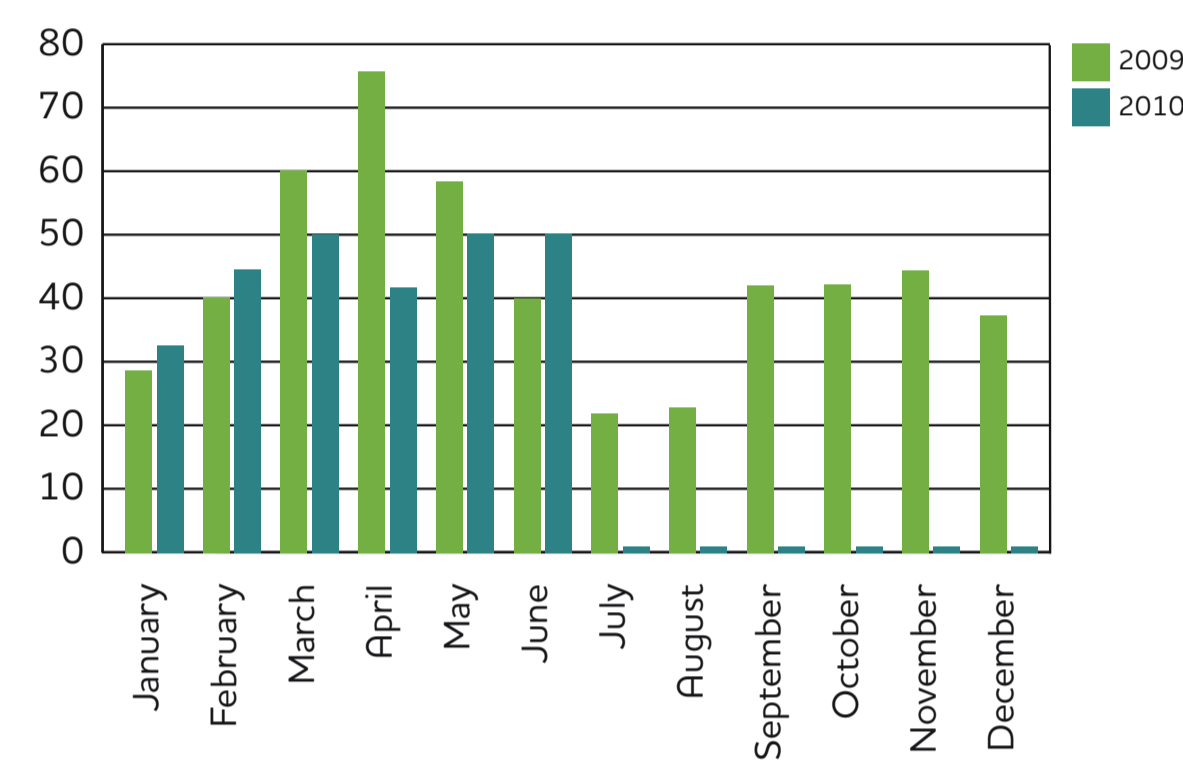
# TO TREAD MORE LIGHTLY

## Environmental Performance Data from ECU

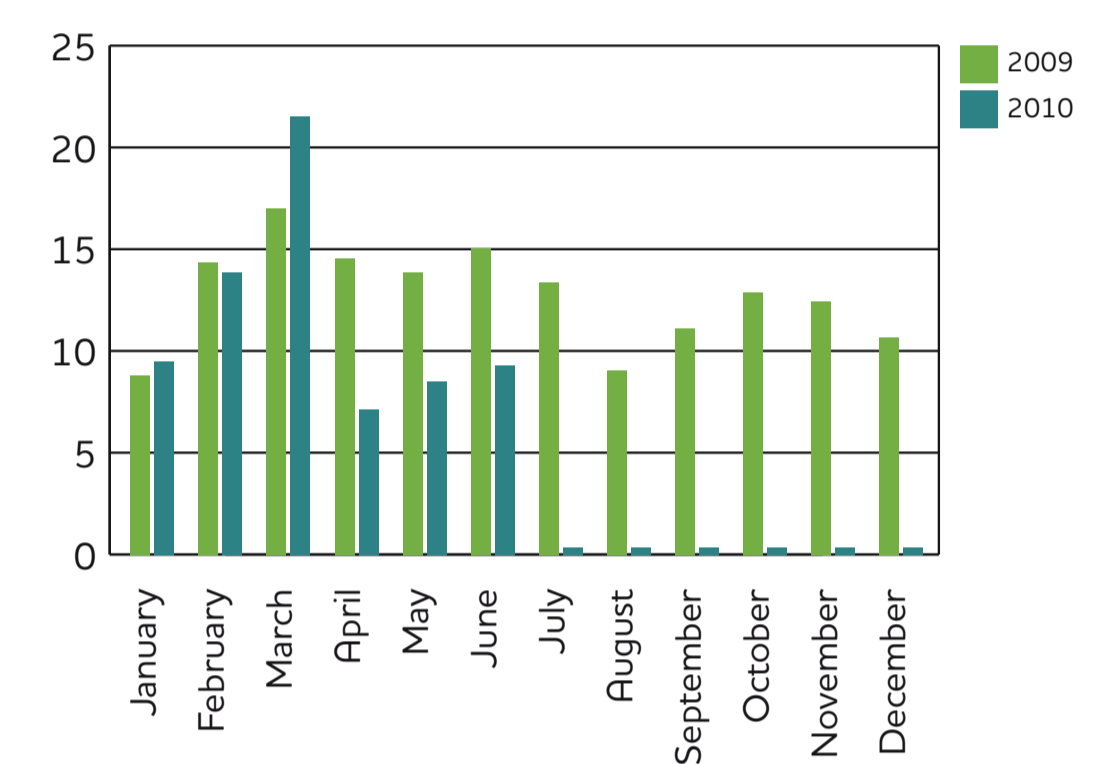
**ECU water consumption figures for 2009/10 (kilolitres)**



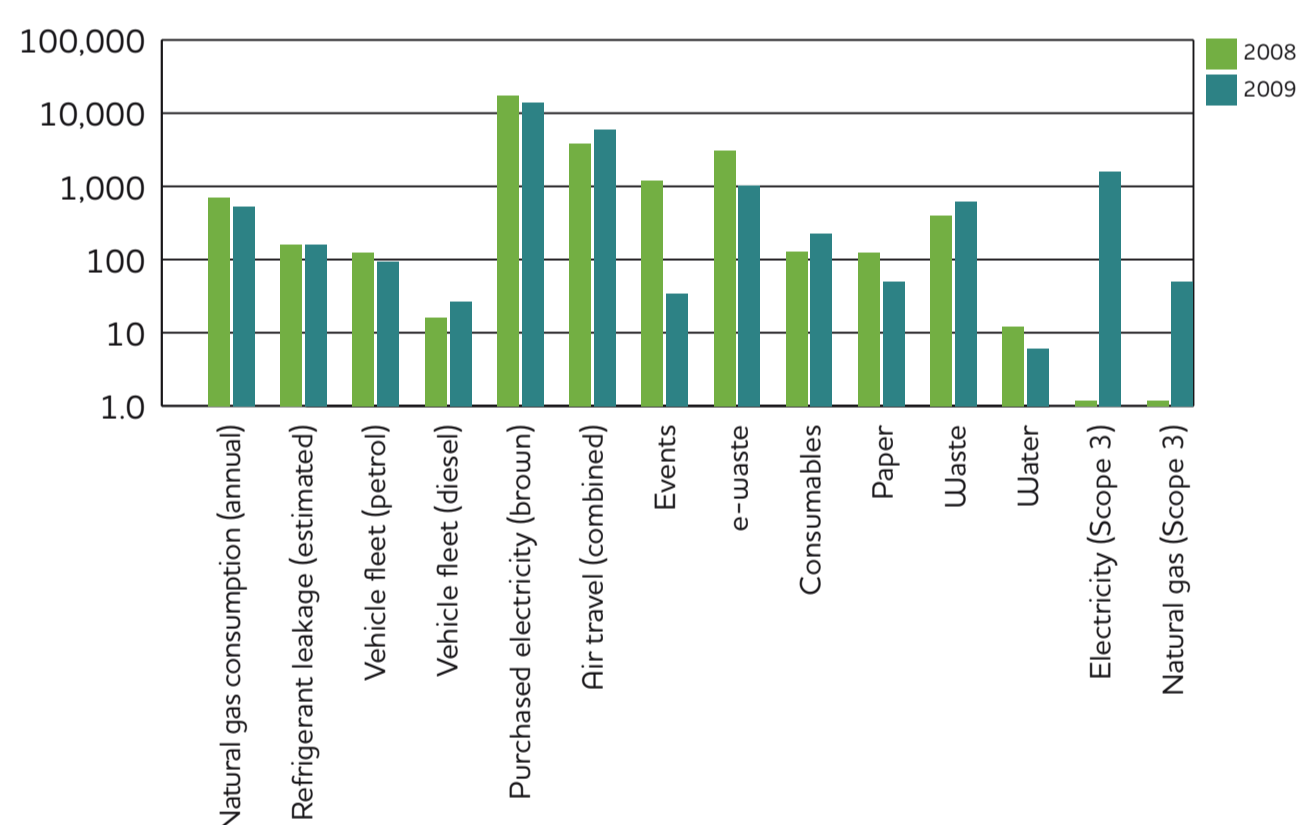
**ECU Annual Waste to Landfill (tonnes)**



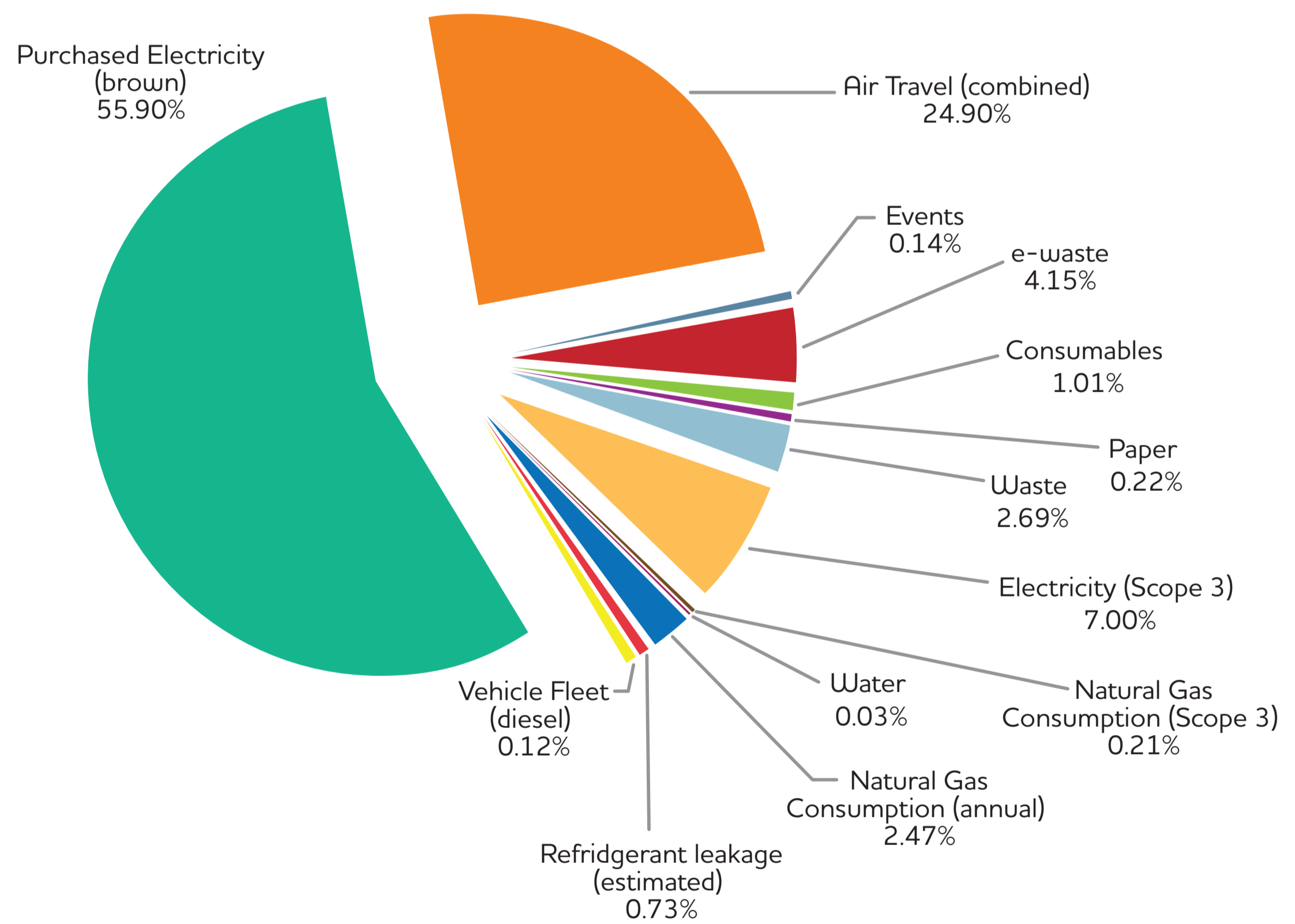
**ECU Annual Waste Recycled (tonnes)**



**Comparison of 2008 & 2009 ECU carbon footprint (tonnes)**



**ECU (Bunbury, Mount Lawley, Joondalup) Carbon Footprint 2009**



The total carbon footprint was calculated as 31,428 tonnes of CO<sub>2</sub>e for 2009. This provides an overview of ECU's carbon footprint for 2009 (fleet vehicles are offset and 5% of electricity is sourced from renewable energy supplies). Vehicle fleet fuel consumption is offset via Carbon Neutral and is not included in the carbon footprint.

**ECU Fleet Emissions (tonnes) per Annum**

